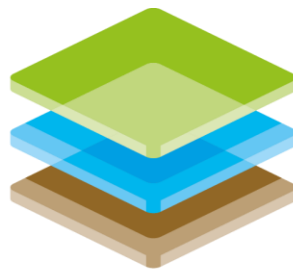


ASSEMBLY AND  
INSTRUCTIONS FOR USE

# SHORING LADDER



terra  
infrastructure

safety: efficient and sustainable

Distributed by:

terra infrastructure GmbH  
Hollestraße 7A  
45127 Essen, Germany

Phone:

+49 2433 453-0

Email:

info@terra-infrastructure.com

Homepage:

<https://www.terra-infrastructure.com>

# CONTENTS

1. Assembly of spacers (depending on the trench depth) .....	3
2. Hooking the shoring ladder .....	4
3. Fixation of the leaning ladder.....	5
4. Descent into the excavation pit .....	6
5. Fully assembled shoring ladder.....	7

## Technical data:

Standard version:	3 m *
Maximum length:	10 m **
Net weight entry + exit:	196 kg
Weight of intermediate piece:	40 kg

\* Available as a 2 m version on request

\*\* 7 intermediate pieces

## Note

Before installation and use, the shoring ladder must be checked for proper condition and function of all parts!

Damaged parts must not be used!

## 1. ASSEMBLY OF SPACERS (DEPENDING ON THE TRENCH DEPTH)



Lower platform

Intermediate piece

Upper platform

The standard version of the shoring ladder is 3 m long (tare weight: 196 kg)



The length of the shoring ladder can be varied using a screw system. 1 m long intermediate pieces (net weight: 40 kg) extend the shoring ladder up to a maximum of 10 m.



The intermediate pieces are screwed together using 4 M12 screws (SW19, strength min. 8.8) with self-locking nuts.

## 2. HOOKING THE SHORING LADDER

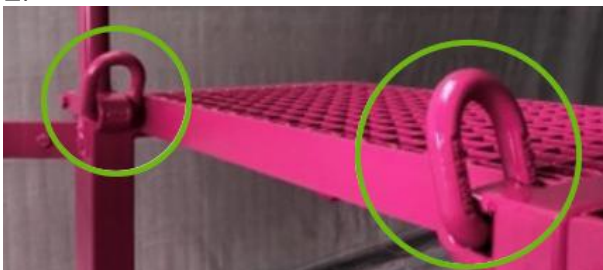
1.



Hook in using an excavator.

The fall protection system must be closed in the edge areas during this process.

2.



**2 anchorage points** for the attachment of lifting chains are provided on the upper platform.

3.

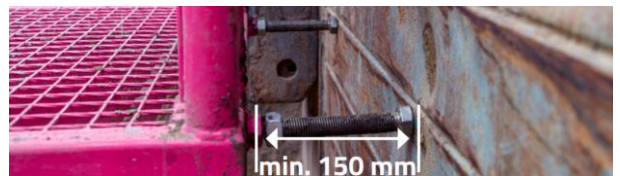


Hooked-in shoring ladder. The ladder must rest on the entire surface with a positive fit.

4.



There are 2 adjusting screws (SW30) on the lower platform and on each intermediate piece of the shoring ladder for vertical alignment.



The minimum distance to the shoring must be 150 mm to ensure sufficient slip resistance. Depending on requirements, work with or without spacer sleeves.

### 3. FIXATION OF THE LEANING LADDER



The ladder is secured as tightly as possible around the ladder rail on the landing side using a chain to prevent it from tipping sideways.



Depending on the attachment position, there are 5 eyelets on both sides for attaching the carabiner to the chain.

#### 4. DESCENT INTO THE EXCAVATION PIT



The last section of the descent into the excavation pit is realised using a single ladder. This can be attached to both sides of the lower platform of the shoring ladder.



**Attention:**

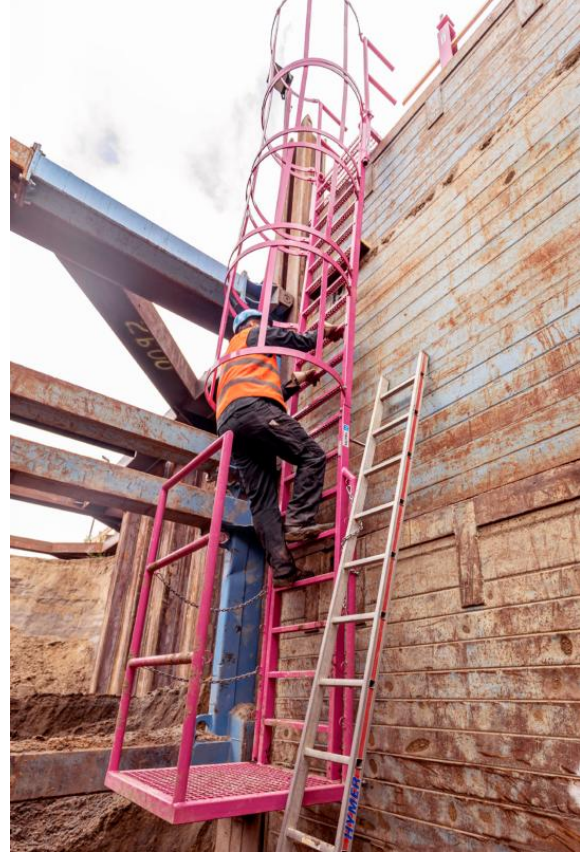
The remaining height between the lower platform and the floor must be kept as low as possible!



**Attention:**

After complete assembly and before the first use, the ladder must now be visually inspected by a qualified person (in accordance with TRBS 1203)!

## 5. FULLY ASSEMBLED SHORING LADDER



Fully assembled shoring ladder.

### Note:

Clean your footwear of coarse dirt before ascending and descending! For this purpose, the upper and lower platforms are designed as gratings.



### Attention:

The shoring ladder may only be used by **one person at a time**.

### Recurring inspections:

In accordance with the Industrial Safety Ordinance, the shoring ladder must be inspected at least once a year, but at shorter intervals if necessary.

#### **Baltic States**

terra infrastructure UAB  
Liepų str. 83  
93269 Klaipėda  
Lithuania  
P: +370 46 355-401  
info@terra-infrastructure.lt  
www.terra-infrastructure.com/lt

#### **Eastern Europe**

terra infrastructure GmbH  
Hollestr. 7a  
DE-45127 Essen  
Germany  
P: +49 201 565 783 20  
easterneurope@terra-infrastructure.com  
www.terra-infrastructure.com/eu/en

#### **South West Europe**

terra infrastructure GmbH  
Hauptstrasse 35a  
77866 Rheinau-Freistett  
Germany  
P: +49 7844 9143 0  
export-sweurope@terra-infrastructure.com  
www.terra-infrastructure.com/eu/en

#### **Group Headquarter**

terra infrastructure GmbH  
Hollestr. 7a  
DE-45127 Essen  
Germany  
P: +49 201 565 783 20  
info@terra-infrastructure.com  
www.terra-infrastructure.com